

August 10, 2017

BOARD MATTER F-7

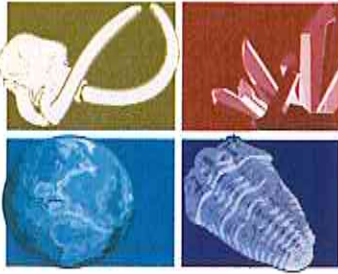
ACTION: Annual Reporting for Exclusive Fossil Removal Permit
FRP-00334 – INFORMATIONAL ONLY

AUTHORITY: W.S. § 36-1-114; Board of Land Commissioners' Rules and Regulations, Chapter 11, Section 14(d)

ANALYSIS:

The attached annual report for Exclusive Fossil Removal Permit FRP-00334 is submitted for Board of Land Commissioners' review:

<u>Lease</u>	<u>Applicant</u>	<u>Description</u>	<u>Acres</u>	<u>County</u>
FRP-00334	University of Wisconsin Madison	T52N R91W Sec. 16 NWSEW	20.00	Big Horn



University of Wisconsin - Madison

Department of Geoscience, UW Geology Museum

Lewis G. Weeks Hall
1215 W. Dayton St.
Madison, WI 53706

Office phone: 608-890-4949
FAX: 608 / 262-0693
www.geologymuseum.org

ATTN: Dianna Wolvin
Wyoming Office of State Lands and Investments
122 West 25th St.
Cheyenne, WY 82002

ST. LAND & INVESTMENT
JUL 12 PM 12:21

Dear Administrators,

Over the month of July, 2014, the University of Wisconsin-Madison Geology Museum conducted fieldwork in the area covered by the FRP-00334 permit. One quarry was opened up to remove exposed fossil material from the Jurassic Sundance Formation. The material was dominantly from one specimen of *Megalneusaurus rex*, the second known occurrence of this species in the Jurassic of the lower 48 states, USA.

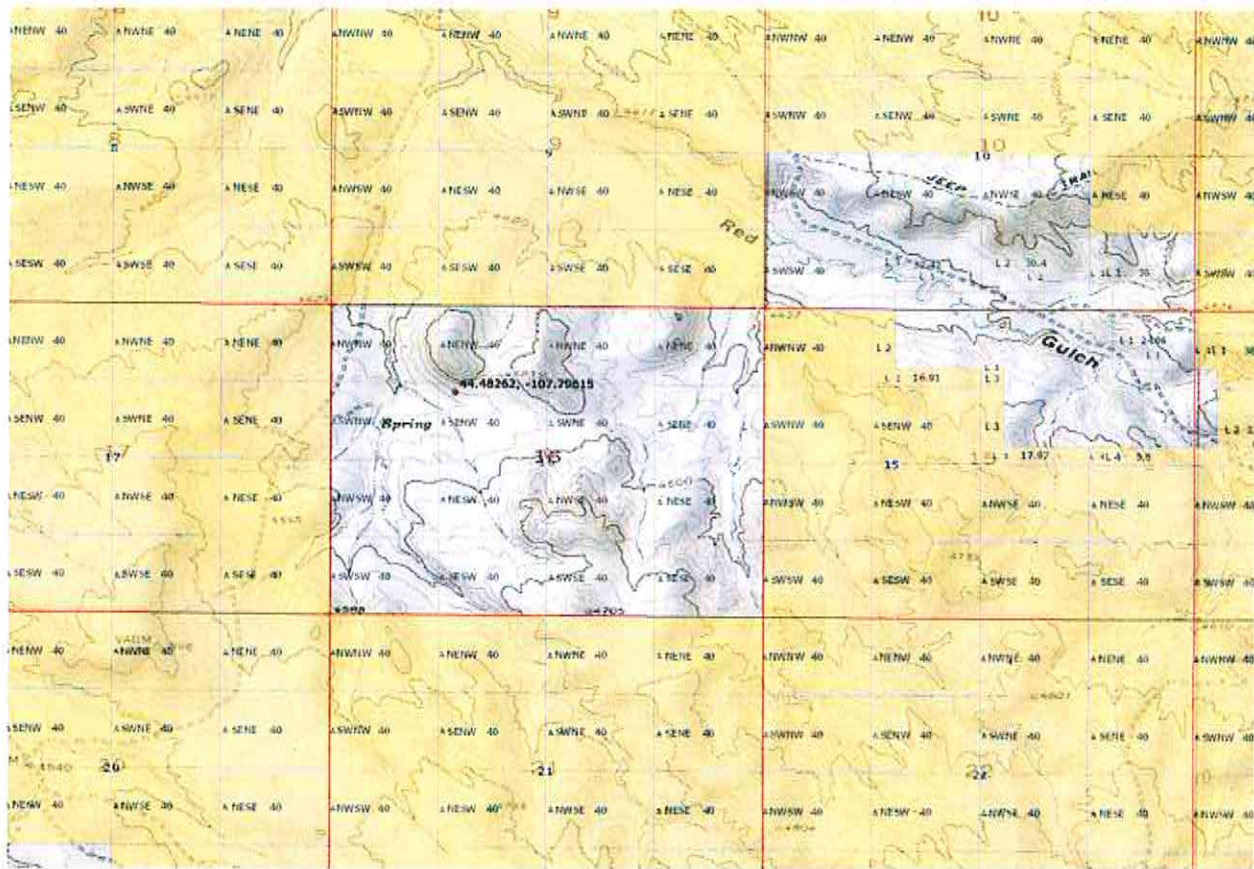
The quarry was approximately 4 meters long, by 2 meters deep, and no greater than 2 meters high at the back wall. All sediment that was removed was placed in a spoils pile above the quarry, and used to backfill the quarry at the end of the season. There was very little disturbance to vegetation as this was a naturally exposed section with little vegetative growth prior to quarrying.

There will be no further excavation at this quarry. After exposing the surface of the bone-bearing horizon we were able to ascertain that the surface preserved a few random elements (one rib, several distal limb material), and little to suggest that more of the specimen was easily accessible, or even present. Likely the specimen is spread over a very great distance (where preserved at all). To this end, we consider this quarry closed. The catalogue number for the collected specimen is UWGM 2104.

Thank you for the opportunity to preserve this rare, although very incomplete, specimen. All papers, talks will acknowledge the State Lands and Investments office and the permit number under which this specimen was collected. If there is anything further you require at this time do not hesitate to ask.

Sincerely,

Dave Lovelace, PhD.



Locality Map: Section 16.

GPS coordinates of site. 44.48262 -107.89615



